

F1 Integrated series tracklight

10-15W



Commercial lighting Expert

Your reliable Commercial Lighting Solution Partner from China

Features:

Materials: 6063 brushed Aluminum

Size: D62xH140mm

Finish: White RAL9016

Black RAL9003

LED brand: Citizen COB LED

LED lumen: 130-150lm/W @CRI80

Lamp efficiency: 90-120lm/W

Color:&CRI: 2700K 80+,90+,97+

3000k 80+,90+,97+

3500K 80+,90+

4000k 80+,90+,97+

5000K 80+,90+

Track adapter: Powergear 6/4 wire 3 phase, 3/2 wire 1 phase

Global 6/4 wire 3 phase

Unipro 4 wire 3 phase

Driver brand: Tridonic, BOKE, Lifud

Voltage: AC200-240V, AC100-240V

Power Factor: >0.90

Dimmable: DALI, TRIAC, 0/1-10V, ZigBee, RF, Push

Wattage: 10W,12W, 15W

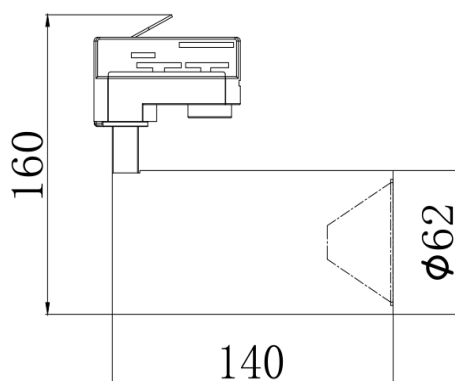
Adjustable: Continual 350°

Vertical 90°

Beam angle: 15/24/38°

Warranty: 3-5 years

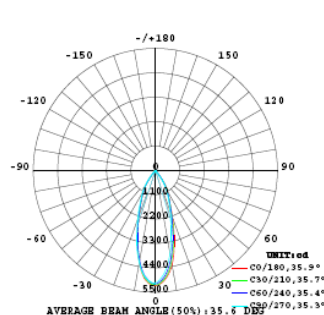
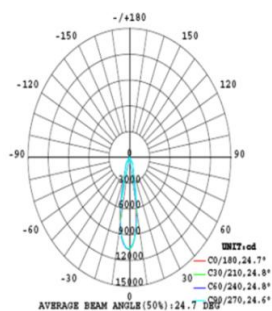
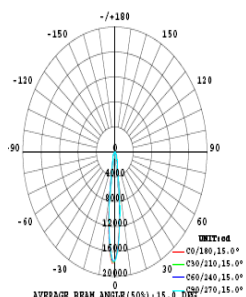
Drawing @ size



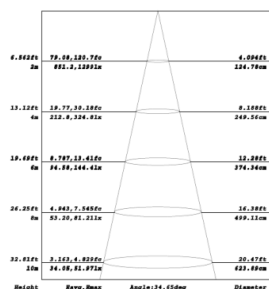
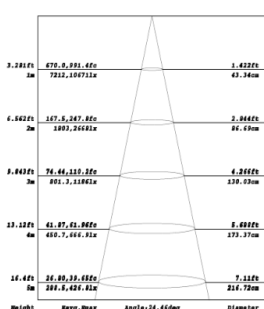
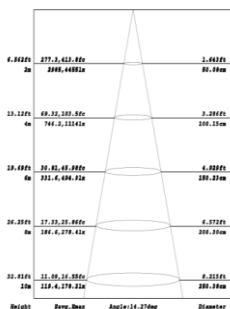
Beam angle: 15

Beam angle: 24°

Beam angle: 36°



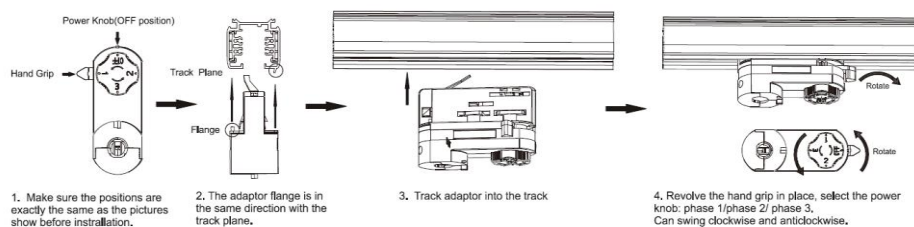
Distance curve



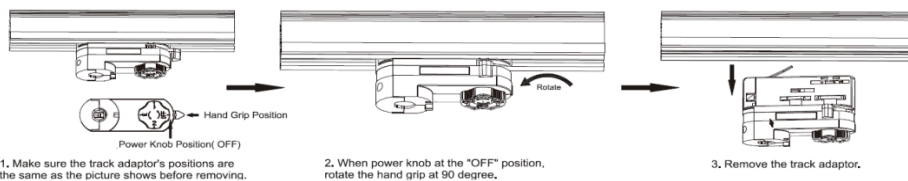
Package:

Model	XH-TL-10W-F1	XH-TL-12W-F1	XH-TL-15W-F1
Quantity:	24pcs	24pcs	24pcs
Inner box size:	163x65x157mm	163x65x157mm	163x65x157mm
Carton size:	520*282*340mm	520*282*340mm	520*282*340mm
Gross Weight:	14.35kg	14.35kg	14.35kg

Installation manual



Remove manual



XH-TL-15W-F1 The technical data represent rated values for an ambient temperature of 25degree, the data values for the luminousflux are initially subject to a tolerance of +/-10%, those for the electrical connected load are initially subject to a tolerance of +/-10%, and those for the color temperature are initially subject to a tolerance of +/- 150K, No liability is assumed for typographical or printing errors the general terms and conditions of Xinghuo LED Tech Limited