

Q Integrated series tracklight 25-35W



Commercial lighting Expert

Your reliable Commercial Lightng Solution from China

Features:

Materials: ADC12 Die cast Aluminum

Size: D90xH153mm

Finish: White RAL9016
Black RAL9005

LED brand: Citizen COB LED

LED lumen: 130-150lm/W @CRI80

Lamp efficiency: 90-120lm/W @CRI80

Color:&CRI: 2700K 80+,90+,97+
3000k 80+,90+,97+
3500K 80+,90+
4000k 80+,90+,99+
5000K 80+,90+

Track adapter: Powergear 6/4 wire 3 phase, 3/2 wire 1 phase
Global 6/4 wire 3 phase
Unipro 4 wire 3 phase

Voltage: AC200-240V, AC100-240V

Power Factor: >0.95

Dimmable: DALI, TRIAC, 0/1-10V, ZigBee, RF, Push

Wattage: 20W(500mA), 25W(600mA), 30W(700/750mA), 35W(800mA)

THD <15%

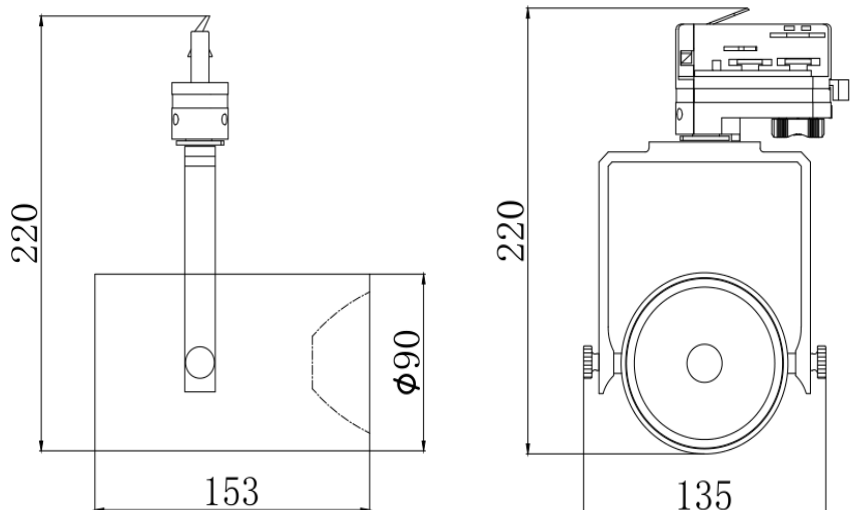
Adjustable: Continual 350° Vertical 180°

Beam angle: 15/24/38/60°

Warranty: 3-5 years



Drawing @ size



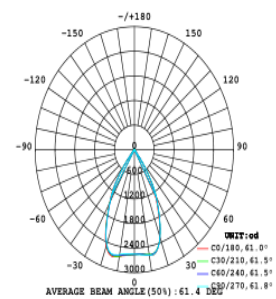
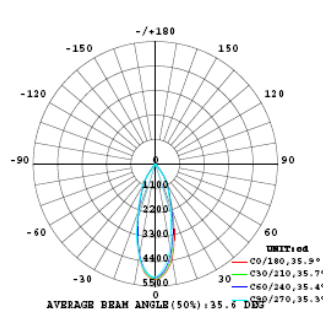
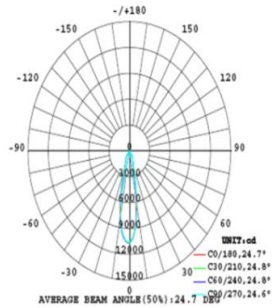
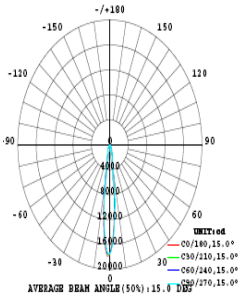
Light Distribution

Beam angle: 15°

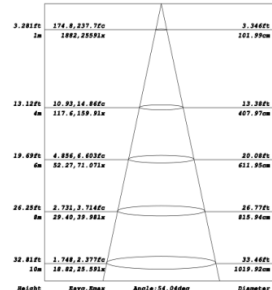
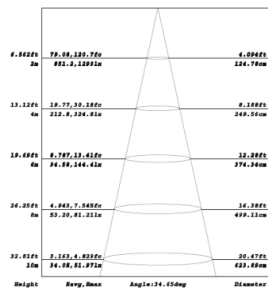
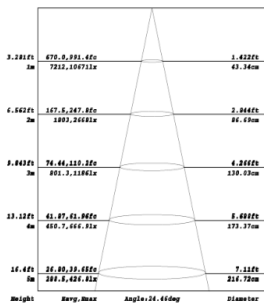
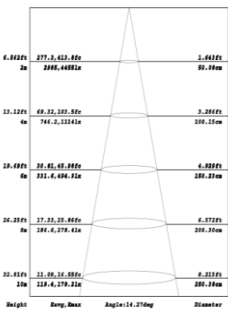
Beam angle: 24°

Beam angle: 36°

Beam angle: 60°



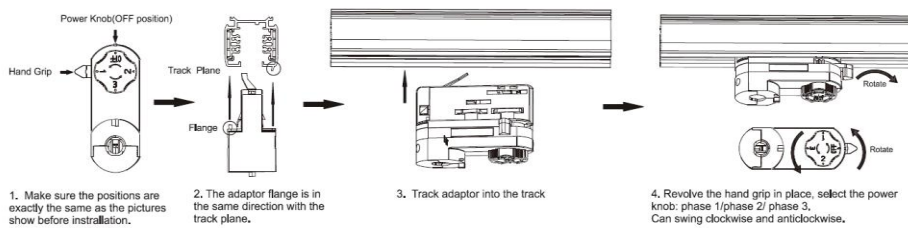
Distance curve



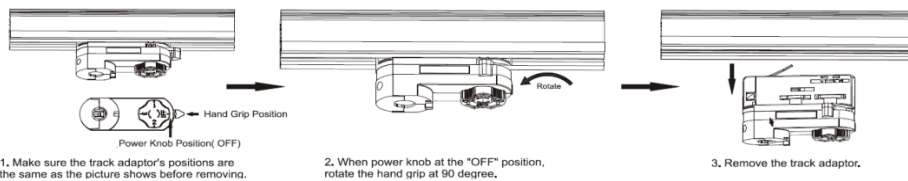
Package:

Model	XH-TL-20W-Q	XH-TL-25W-Q	XH-TL-30W-Q	XH-TL-35W-Q
Quantity:	12pcs	12pcs	12pcs	12pcs
Inner box size:	115x115x300mm	115x115x300mm	115x115x300mm	115x115x300mm
Carton size:	405*358*H325mm	405*358*H325mm	405*358*H325mm	405*358*H325mm
Gross Weight:	15.5kg	15.5kg	15.5kg	15.5kg

Installation manual



Remove manual



XH-TL-20W-O The technical data represent rated values for an ambient temperature of 25degree, the data values for the luminousflux are initially subject to a tolerance of +/-10%, those for the electrical connected load are initially subject to a tolerance of +/-10%, and those for the color temperature are initially subject to a tolerance of +/- 150K, No liability is assumed for typographical or printing errors the general terms and conditions of Xinghuo LED Tech Limited