



DALI LED Track Light

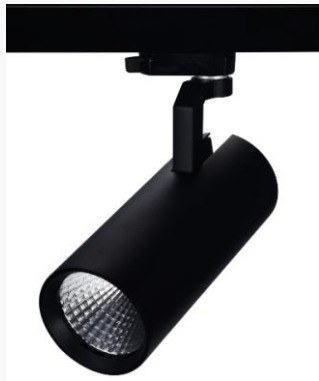
10 years commercial lighting experiences
Your best LED lighting partner

DALI LED Track Light catalogue

F1 series



M series



C series



N series



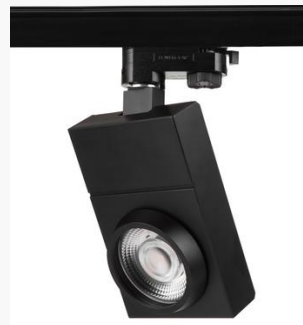
OR series



O series



I series



F1Z series



1	Description:	Page 3-6
2	F1 series DALI LED track light	Page 8
3	M series DALI LED track light	Page 9
4	N series DALI LED track light	Page 10
5	C series DALI LED track light	Page 11
6	OR series DALI LED track light	Page 12
7	O series DALI LED track light	Page 13
8	I series DALI LED track light	Page 14
9	F1Z series DALI LED track light	Page 15
10	FAQ	Page 16

6 wire DALI track adapter?

DALI signals connectors, it is completely separately with AC input

AC Input, L1,L2,L3 And N



DALI driver built in track series

AC Input,
L1,L2,L3
And N

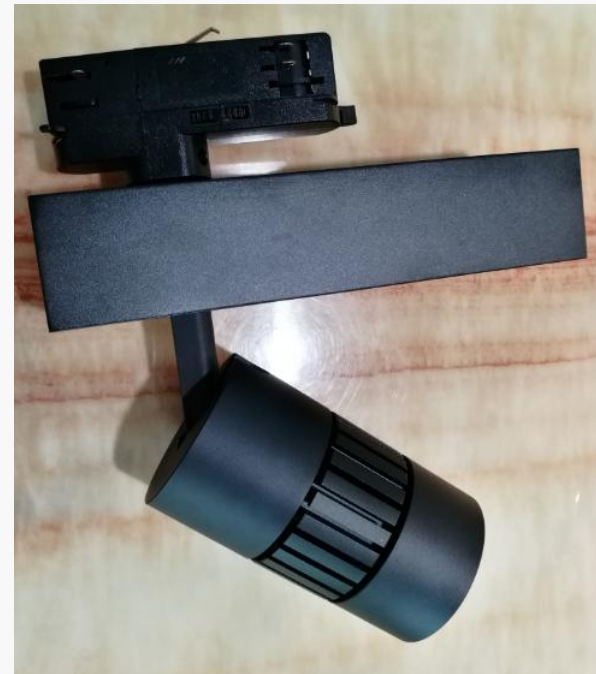


DALI signals
are separately

- **Global 6-wire 3 phase DALI track adapter**



- **Power gear 6 wire 3 phase DALI track adapter**



- **Our DALI LED track light is completely different with most of the track light in the markets, the signals was completely separately with AC in put, avoid the mistake of the fixture and no interfere to the signals, it is much safer and better lighting performance.**
- **DALI series LED track light, our track light can work with Tridonic, Philips, Mean Well, Lunatone, TCI, Euchips, BOKE etc DALI driver, dimmable and flicker free, you can get a excellent performance with our track light,.**
- **It is work with Single color, CCT adjustable and RGB LEDs, we take latest technology DT8 for CCT adjustable and RGB LEDs, it can help you save DALI address and DALI master etc, for single color LEDs, we take DT6 technology DALI driver,**

It is ok take Global 6 wire DALI track adapter or Powergear 6 wire DALI track adapter for your selection.

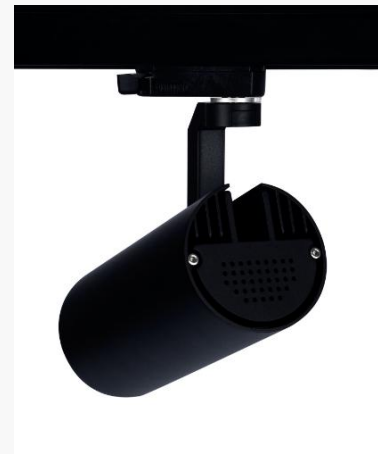
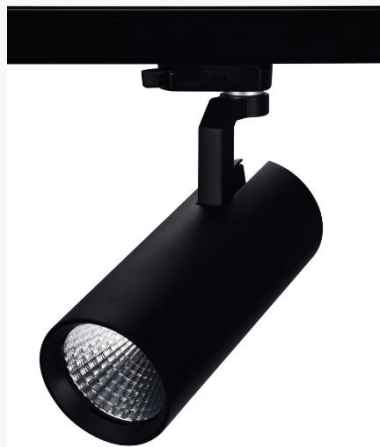
F1 Series DALI LED tracklight

- **LED light source:** CITIZEN / CREE / Bridgelux COB LEDs,
- **Lumen:** 90-120lm/W, CRI97, 90+/80+ for your selection
- **Housing Material :** 6063 Brushed aluminum,
- **Phase:** 6-wire 3 phase DALI track adapter
- **Power Option:** 20W, 25W, 30W, 35W, 40W, 45W
- **Driver:**TCL, HEP, Tridonic, Osram, BOKE, Powergear+TCL intrack
- PF>0.95, PE>88%, DALI dimmable and flicker free,
- **Driver built in and intrack adapter 2 series**
- **Warranty:** 5 years warranty



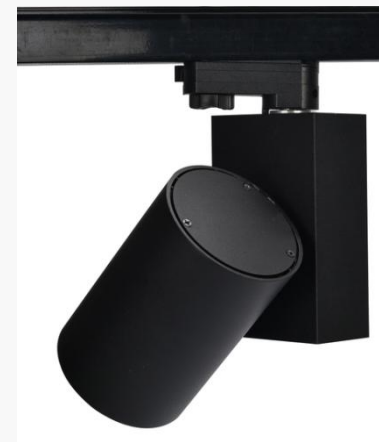
M Series DALI LED tracklight

- **LED light source:** CITIZEN / CREE / Bridgelux COB LEDs,
- **Lumen:** 90-120lm/W, CRI97, 90+/80+ for your selection
- **Housing Material :** ADC12 die cast aluminum,
- **Phase:** 6-wire 3 phase DALI track adapter
- **Power Option:** 15W, 20W, 25W, 30W, 35W, 40W, 45W
- **Driver:**TCL, HEP, Tridonic, Osram, BOKE, Powergear+TCL intrack
- PF>0.95, PE>88%, DALI dimmable and flicker free,
- **Driver built in and intrack adapter 2 series**
- **Warranty:** 5 years warranty



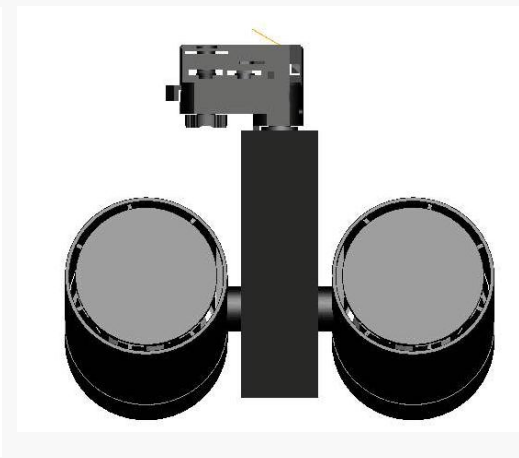
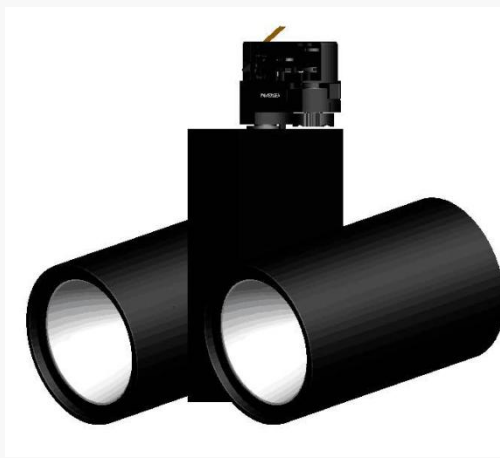
C Series DALI LED tracklight

- **LED light source:** CITIZEN / CREE / Bridgelux COB LEDs,
- **Lumen:** 90-120lm/W, CRI97, 90+/80+ for your selection
- **Housing Material :** 6063 Brushed aluminum,
- **Phase:** 6-wire 3 phase DALI track adapter
- **Power Option:** 20W, 25W, 30W, 35W, 40W, 45W
- **Driver:** TCI, HEP, Tridonic, Osram, BOKE
- PF>0.95, PE>88%, DALI dimmable and flicker free,
- **Driver in side driver box, external version**
- **Warranty:** 5 years warranty



N Series DALI LED tracklight

- **LED light source:** CITIZEN / CREE / Bridgelux COB LEDs,
- **Lumen:** 90-120lm/W, CRI97, 90+/80+ for your selection
- **Housing Material :** 6063 Brushed aluminum,
- **Phase:** 6-wire 3 phase DALI track adapter
- **Power Option:** 40W, 45W, 50W, 60W, 80W, 90W
- **Driver:** TCI, HEP, Tridonic, Osram, BOKE
- PF>0.95, PE>88%, DALI dimmable and flicker free,
- **Driver in side driver box, external version**
- **Warranty:** 5 years warranty



OR Series DALI LED tracklight

- **LED light source:** CITIZEN / CREE / Bridgelux COB LEDs,
- **Lumen:** 90-120lm/W, CRI97, 90+/80+ for your selection
- **Housing Material :** 6063 Brushed aluminum,
- **Phase:** 6-wire 3 phase DALI track adapter
- **Power Option:** 15W, 20W, 25W, 30W, 35W
- **Driver:** **Powergear+TCI intrack, Global intrack**
- PF>0.95, PE>88%, DALI **dimmable and flicker free**,
- **Driver intrack adapter, intrack version**
- **Warranty:** 7-10 years warranty



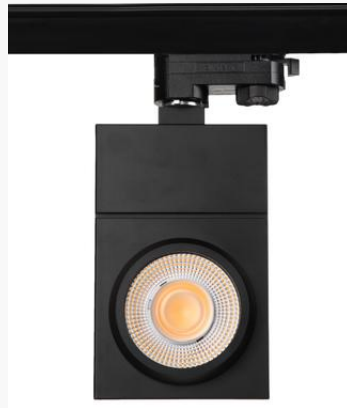
O Series DALI LED tracklight

- **LED light source:** CITIZEN / CREE / Bridgelux COB LEDs,
- **Lumen:** 90-120lm/W, CRI97, 90+/80+ for your selection
- **Housing Material :** 6063 Brushed aluminum,
- **Phase:** 6-wire 3 phase DALI track adapter
- **Power Option:** 15W, 20W, 25W, 30W, 35W
- **Driver:** **Powergear+TCI intrack, Global intrack**
- PF>0.95, PE>88%, DALI **dimnable and flicker free**,
- **Driver intrack adapter, intrack version**
- **Warranty:** 7-10 years warranty



I Series DALI LED tracklight

- **LED light source:** CITIZEN / CREE / Bridgelux COB LEDs,
- **Lumen:** 90-120lm/W, CRI97, 90+/80+ for your selection
- **Housing Material :** 6063 Brushed aluminum,
- **Phase:** 6-wire 3 phase DALI track adapter
- **Power Option:** 20W, 25W, 30W, 35W
- **Driver:**TCL, HEP, Tridonic, Osram, BOKE, Powergear+TCL intrack
- PF>0.95, PE>88%, DALI dimmable and flicker free,
- **Driver built in and intrack adapter 2 series**
- **Warranty:** 5 years warranty



F1Z Zoomable Series DALI LED tracklight

- **LED light source:** CITIZEN / CREE / Bridgelux COB LEDs,
- **Lumen:** 90-120lm/W, CRI97, 90+/80+ for your selection
- **Housing Material :** 6063 Brushed aluminum,
- **Phase:** 6-wire 3 phase DALI track adapter
- **Power Option:** 20W, 25W, 30W, 35W
- **Driver:**TCl, HEP, Tridonic, Osram, BOKE, Powergear+TCl intrack
- PF>0.95, PE>88%, DALI dimmable and flicker free,
- **Driver built in and intrack adapter 2 series**
- **Warranty:** 5 years warranty



- **FAQ:**
- **1. What type of the lamp can be DALI dimmable?**
- Most of our track light and downlight are ok to be DALI Dimmable
- **2. What type of the driver brands you use?**
- TCI, Osram,, Philips, Tridonic, HEP, Mean Well, BOKE etc.
- **3. What type of the track adapter you use for your tracklight?**
- Currently we use 6 wire 3 phase track adapter for our DALI LED tracklight, some projects can be 4 wire 1 phase DALI solution too
- **4. What type of the track adapter brand you use?**
- We use Global, Powergear.
- **5. What type of the DALI driver you use?**
- We use DT6 for single color, DT8 and DT6 for 2 color or multi color lamps

The End

Thank you



Add: 3F Bldg3, Landwind Industrial Zone, Tangtou Avenue, Shiyan Town, Bao'an District, Shenzhen, China. 518108

Tel: 0086-755-29681895

Fax: 0086-755-29681896

Web: www.ledxh.cn

Email: support@ledxh.cn