



1. Product name: 30W F1 LED track light

2. Product model: XH-TL-30W-F1

3. Product photo:



4. Features:

Adapter 6063 brushed aluminum alloy as body materials, better for heat dissipation, Citizen Version 6 COB LEDs as light source, higher lumen, higher CRI, lower thermal resistance, isolated constant current LED driver, flicker free and dimmable. Both lens and reflectors are available for this lamp, can give us more choice for the beam angle and the lighting.

5. Parameter:

Body materials	6063 brushed aluminum	track adapter	Global/Powergear
Phase	3phase/1phase	Housing color	Black/White/Silver
LED brand	Citizen/CREE	LED efficiency	90-120lm/W
Color&Kelvin	2700/3000K/4000K/5000K	CRI	80+/90+/97+
Macadam	within 3 step	Beam angle	10°/20°/30°/60° (lens),
LED driver	Tridonic/Philips/HEP/Xinghuo		12°/23°/36°/60°(Reflectors)
Voltage	AC200-240V/AC100-240V	Power factory	>0.95
THD	<15	Dimmable	DALI/TRIAC/0/1-10V/ZigBee/RF/DMX
LED Wattage	27W	Lamp wattage	31.5W
Working temperature	-20-45degree	Light span	50000hours

6. Advantage:

6063 bruised aluminum as body materials, unique design make better air convection, heat dissipation and excellent thermal performance, less heat, long lifespan and lower light decay.

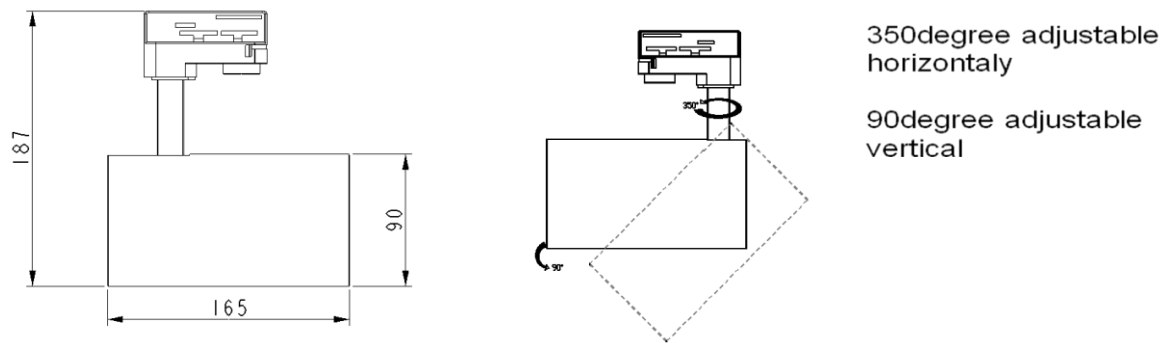
Higher lumen efficiency: with Citizen Version 6 COB LEDs as light source, Aluminum alloy reflector and high efficiency driver make the lumen efficiency 90-120lm/W @CRI80



High CRI for your reference: 2700K/3000K/4000K @ CRI80+, 90+, 97+ is available, more choice for your projects, better for your clients' experience.

Dimmable and Flicker free, DALI/TRIAC/0/1-10V/ZIGBEE/RF/DMX dimmable and flicker free for your selection, smart control and easy do it.

7. Drawing:

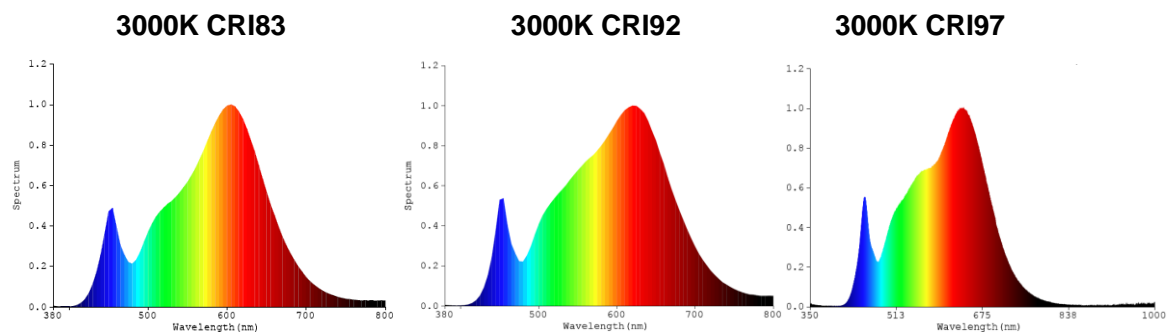


8. Product list:

Model	Picture	Size (DxLxH)	Connector Phase	LED Brand	Power (W)	Voltage& Frequen	Color& Kelvin	lumen@ Ra>80	Beam Angle	IP Rate
XH-TL-15W-F1		90*165*187	Power gear 3 phase track adapter	Citizen Version 6 COB LED	15W	AC200-240V 50/60Hz PF>0.95	2700K 3000K 4000K	120-130lm/W	15° 24° 38°	IP44
XH-TL-25W-F1		90*165*187	Power gear 3 phase track adapter	Citizen Version 6 COB LED	25W	AC200-240V 50/60Hz PF>0.95	2700K 3000K 4000K	120-130lm/W	15° 24° 38°	IP44
XH-TL-30W-F1		90*165*187	Power gear 3 phase track adapter	Citizen Version 6 COB LED	30W	AC200-240V 50/60Hz PF>0.95	2700K 3000K 4000K	120-130lm/W	15° 24° 38°	IP44

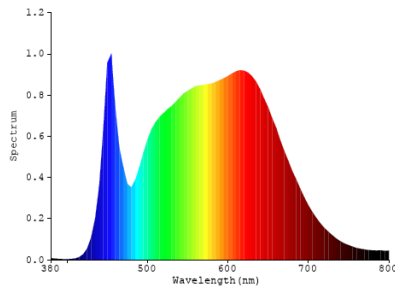
9. Test data:

Spectrum Distribution

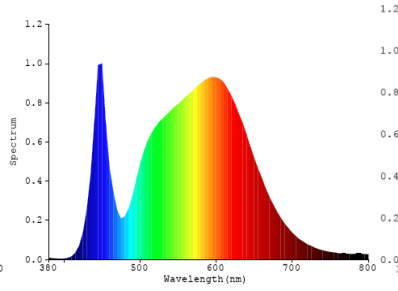




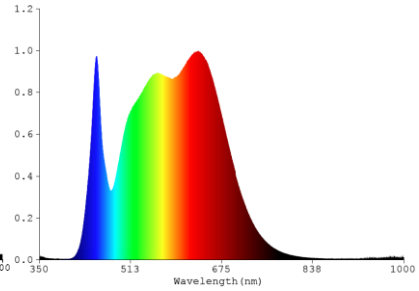
4000K CRI83



4000K CRI92

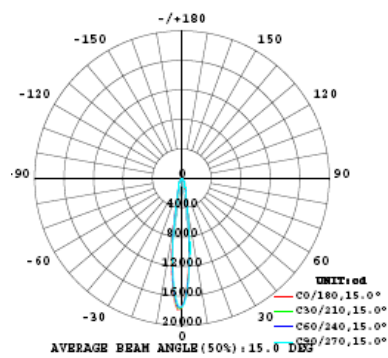


4000K CRI96

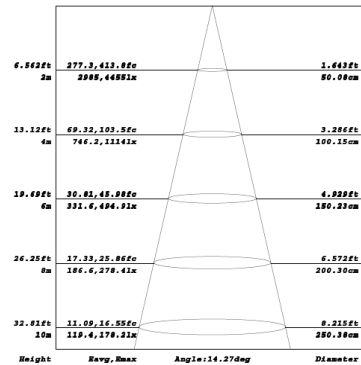


Lumen distribution diagram

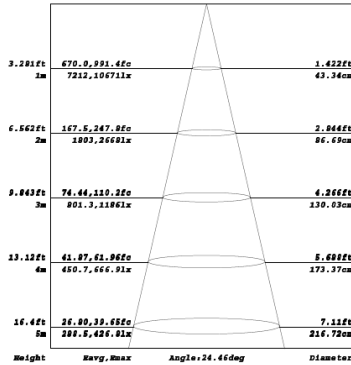
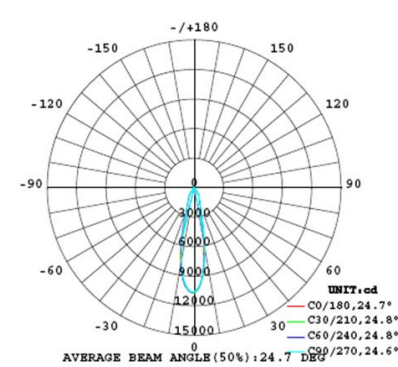
Beam angle 15degree



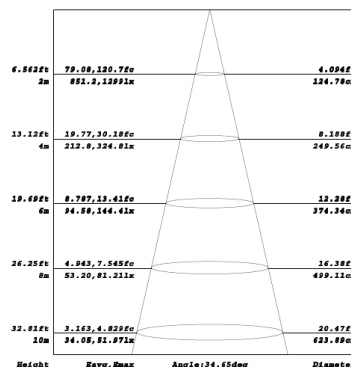
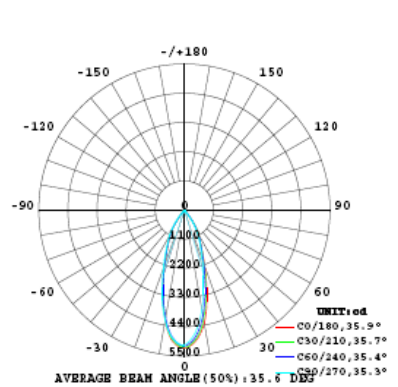
Distance curve



Beam angle 24degree

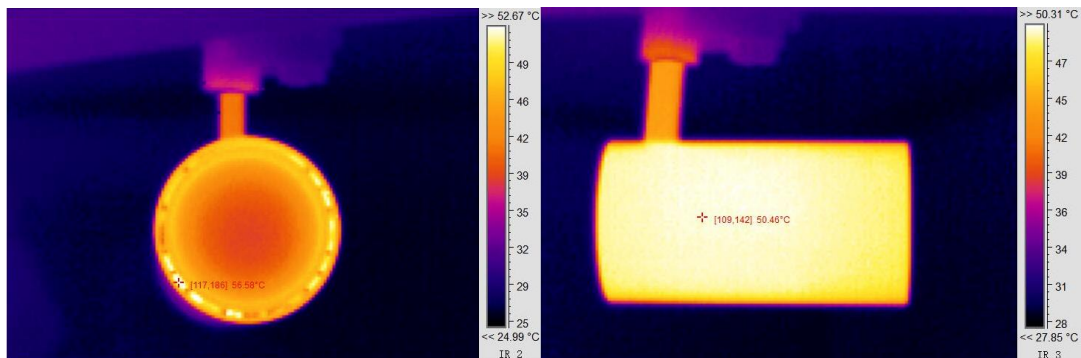


Beam angle 36degree





10. Infrared Thermography:



11. Package:

Model	XH-TL-30-F1
Quantity:	16pcs/carton
Inner box size:	98*98*290mm
Carton size:	400*400*300mm
Gross Weight:	15.5kg

12 Accessories:

Surface mounted holder



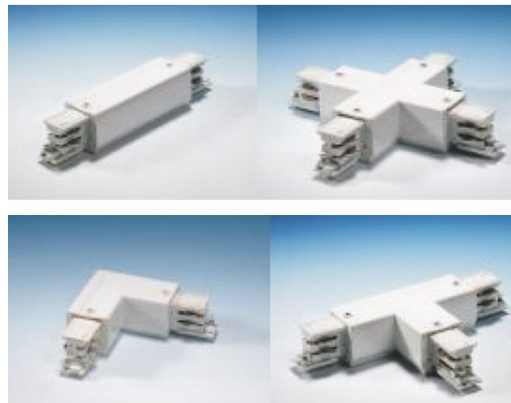
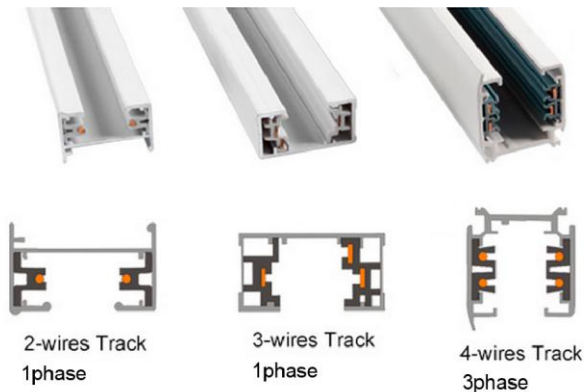
Hanging holder



Honeycomb

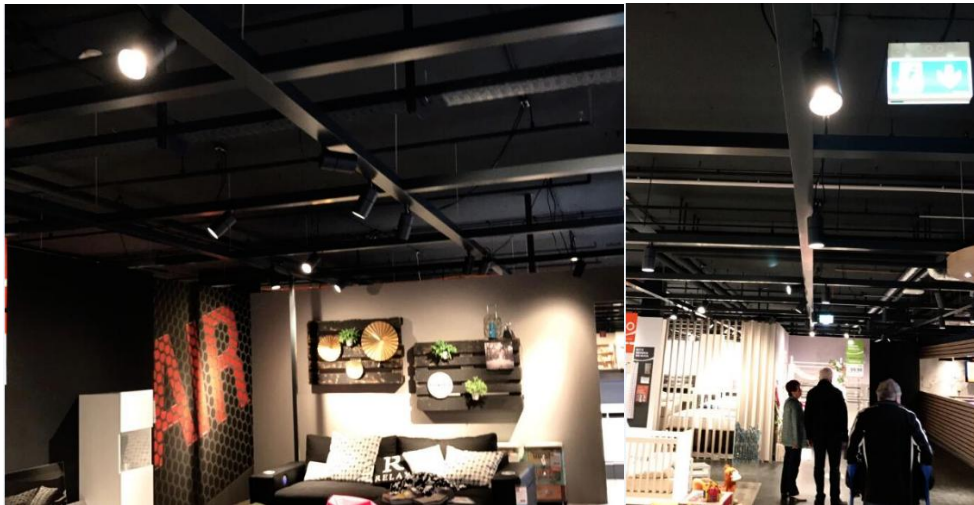


3 type track for 3 type adapter:

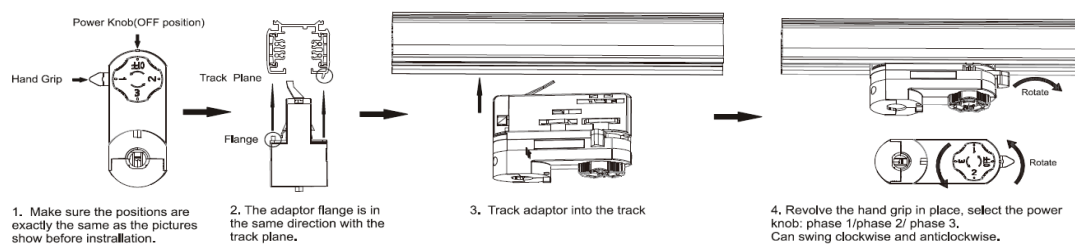




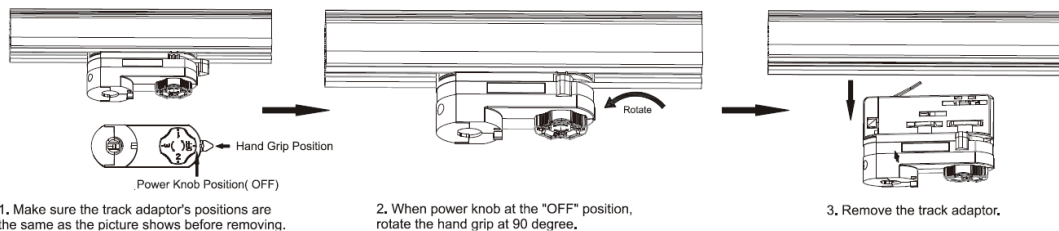
13. Projects:



14 Installation manual:



Remove manual:



15: Attention:

