



**Shenzhen XINGHUO LED TECH LIMITED**

Tel: +86-755-29681895 Web: www.szshoplight.com Email:support@ledxh.cn  
Add: 4F Bldg4,Hongfajiateli Industrial Zone,Tangtou Avenue, Shiyao Town,  
Bao'an District,Shenzhen,China.518108

**Name: Linear LED track light 30W**  
**Model: XH-LTL-30W**

Date
To
Project
Type
Quantity

**Quick info**

**General**

- Ceiling
- Track
- White/black/silver
- 2650-2750lm @CRI90
- IP20
- External driver

**LED**

- SMD3030 /2835
- 2700K/3000K/4000K/6000K
- CRI80+/90+
- L90/50000h
- Initial<3 MacAdam

**Optical**

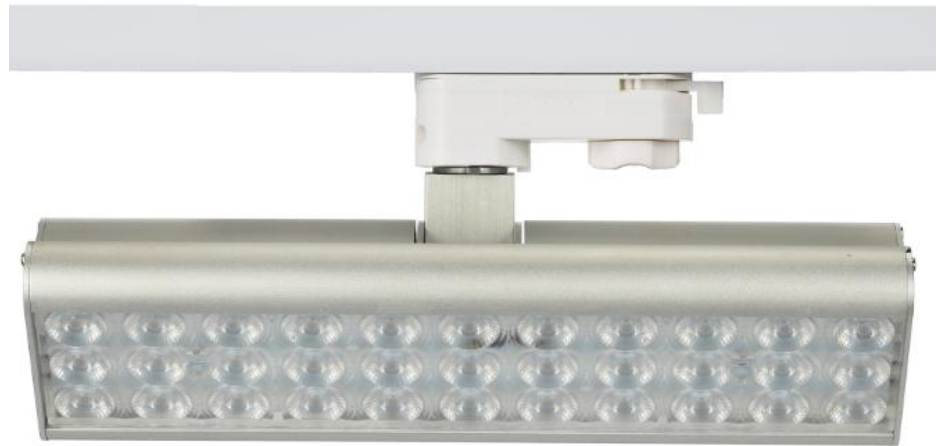
- PC lens
- Beam angle:30°/60°/90°/20x76°

**Physical**

- Length 286mm
- Width 90mm
- Tilt max 330°
- Rotatioin 350°

**Electrical**

- 31W
- Non Dim
- 100lm/W @CRI80



**Description**

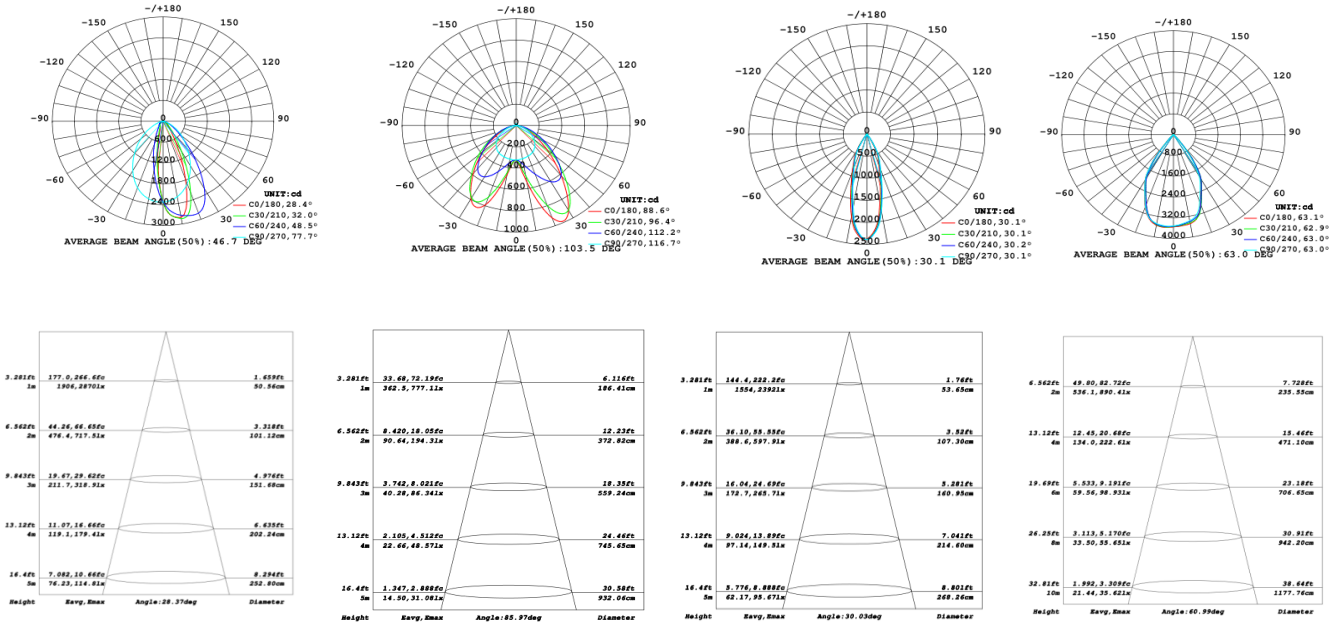
Linear LED track light made of 6063 brushed aluminum alloy, surface powder coated in white and black, 350degree rotatable and 330degree tiltable, optimised for flush ceiling installation, converter intergrated into spotlight head; SMD technology for maximum efficiency,no multiple shadows; everygy-efficient LEDs with very good color rendering; binning initial< 3 MacAdam; available in the light colors 2700K, 3000K and 4000K; CRI>90; min 80% of the luminous flux after 50000 hours; high quality aluminium reflector with spherical facet finish;precise radiation characteristic with four different beam angles; installed and exchanged without tools; protection class IP20; 1/3 phase track adapter for tooless and installation or movement on 3 phase power track



## Shenzhen XINGHUO LED TECH LIMITED

Tel: +86-755-29681895 Web: [www.szshoplight.com](http://www.szshoplight.com) Email: [support@ledxh.cn](mailto:support@ledxh.cn)  
 Add: 4F Bldg4, Hongfajiateli Industrial Zone, Tangtou Avenue, Shiyuan Town,  
 Bao'an District, Shenzhen, China. 518108

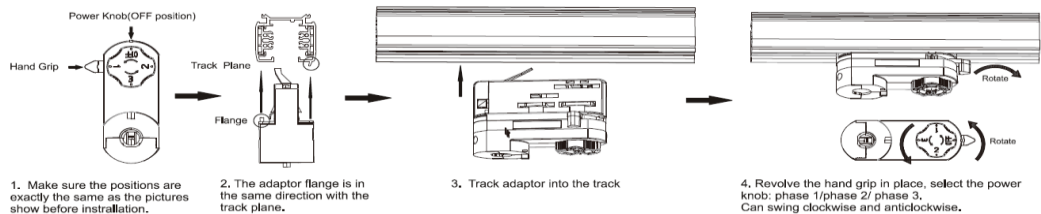
### Light distribution:



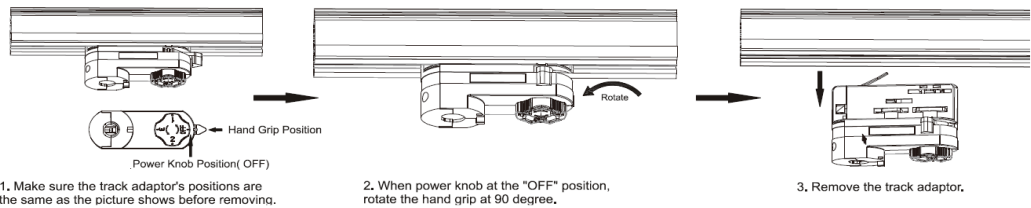
### Package:

Model	XH-LTL-30W
Quantity:	12pcs/carton
Inner box size:	115*115*302mm
Carton size:	405*358*325mm
Gross Weight:	14.8kg

### Installation manual



### Remove manual



XH-TL-30W-F1 The technical data represent rated values for an ambient temperature of 25degree, the data values for the luminous flux are initially subject to a tolerance of +/-10%, those for the electrical connected load are initially subject to a tolerance of +/-10%, and those for the color temperature are initially subject to a tolerance of +/- 150K, No liability is assumed for typographical or printing errors the general terms and conditions of Xinghuo LED Tech Limited