



1. Product name: 30W Ultra Thin Square LED track light

2. Product model: XH-TL-30W-I

3. Product photo:



4. Features:

6063 brushed aluminum alloy as body materials, better for heat dissipation, Citizen Version 6 COB LEDs as light source, higher lumen, higher CRI, lower thermal resistance, Tridonic, HEP isolated constant current LED driver, flicker free. Super transparent lens for this lamps, can give us more choice for the beam angle and the lighting.

5. Parameter:

Body materials	6063 brushed aluminum	track adpter	Global/Powergear
Phase	3phase/1phase	Housing color	Black/White/Silver
LED brand	Citizen/CREE	LED efficency	110-140lm/W
Color&Kelvin	2700/3000K/4000K/5000K	CRI	80+/90+/97+
Macadam	within 3 step	Beam angle	15°/24°/36° (lens),
LED driver	Tridonic/Philips/HEP/Xinghuo		10°/23°/36°/60°(high power lens)
Voltage	AC200-240V/AC100-240V	Power factory	>0.95
THD	<15	Dimmable	TRIAC
LED Wattage	25.5W	Lamp wattage	29W
Working temperature	-20-45degree	Lightspan	50000hours

6. Advantage:

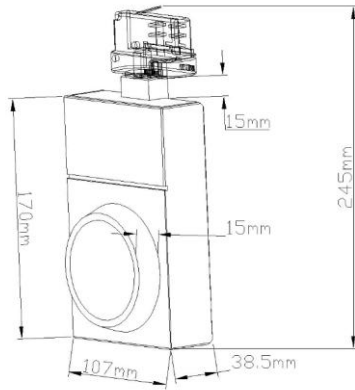
6063 brushed aluminum as body materials, square unique design make better air convection, and excellent heat dissipation, less heat, long lifespan and lower light decay.

Higher lumen efficiency: with Citizen Version 6 COB LEDs as light source, PC lens make higher lumen efficiency and Tridonic driver make the fixture lumen efficiency 90-110lm/W @CRI80



High CRI for your refernece: 2700K/3000K/4000K @ CRI80+, 90+, 97+ is availble, more choice for your projects, better for your clients's experience.

7. Drawing:



350degree adjustable horizontally

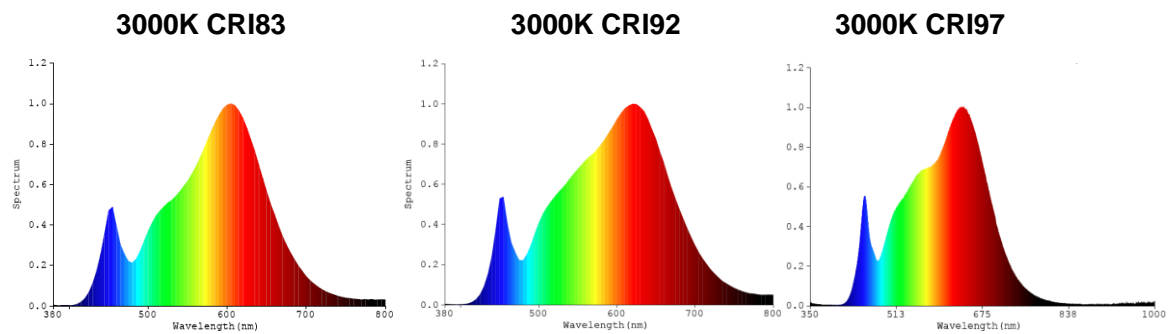
90degree adjustable vertically

8. Product list:

Model No.	Product Picture	Size(DxLxH) (mm)	Power (W)	LED Brand	CRI	Color& Kelvin	lumen@ CRI>97	Beam Angle	Voltage& Frequency	Connector Phase	IP Rate
XH-TL-20W-I		L107*W38.5* H170mm	20W	Version5 Citizen COB LED	97 80 80	2700K 3000K 4000K	1500-1700lm	15° 24° 36°	Tridonic no flicker driver AC200-240V 50/60Hz PF>0.95	3 Phase	IP20
XH-TL-25W-I		L107*W38.5* H170mm	25W	Version5 Citizen COB LED	97 80 80	2700K 3000K 4000K	1800-2000lm	15° 24° 36°	Tridonic no flicker driver AC200-240V 50/60Hz PF>0.95	3 Phase	IP20
XH-TL-30W-I		L107*W38.5* H170mm	30W	Version5 Citizen COB LED	97 80 80	2700K 3000K 4000K	2200-2400lm	15° 24° 36°	Tridonic no flicker driver AC200-240V 50/60Hz PF>0.95	3 Phase	IP20
XH-TL-35W-I		L107*W38.5* H170mm	35W	Version5 Citizen COB LED	97 80 80	2700K 3000K 4000K	2200-2400lm	15° 24° 36°	Tridonic no flicker driver AC200-240V 50/60Hz PF>0.95	3 Phase	IP20
XH-TL-40W-I		L107*W38.5* H170mm	40W	Version5 Citizen COB LED	97 80 80	2700K 3000K 4000K	2200-2400lm	15° 24° 36°	Tridonic no flicker driver AC200-240V 50/60Hz PF>0.95	3 Phase	IP20

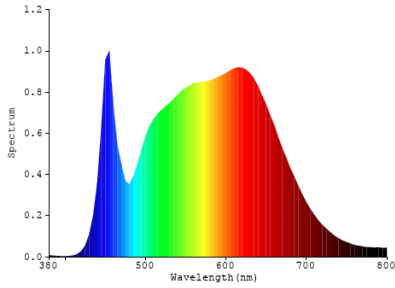
9. Test data:

Spectrum Distribution

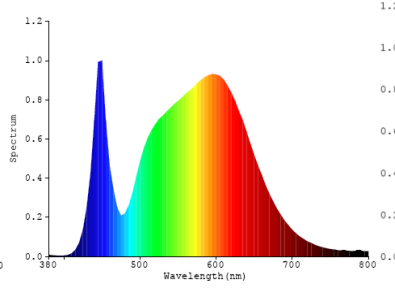




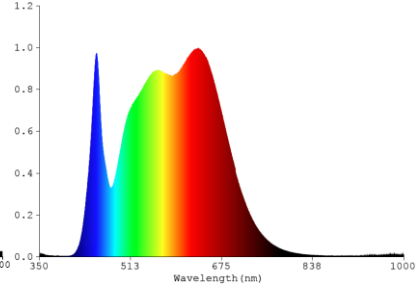
4000K CRI83



4000K CRI92

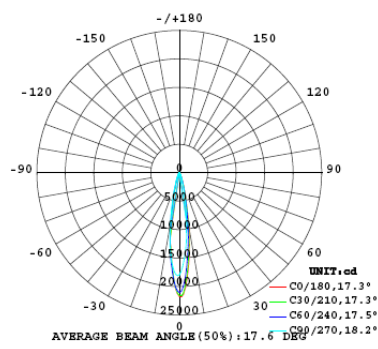


4000K CRI96

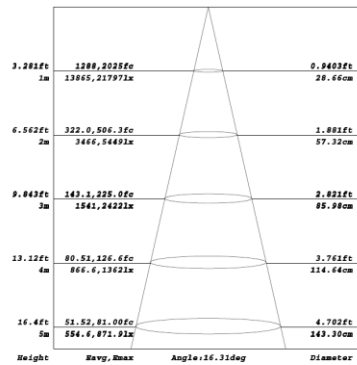


Lumen distribution diagram

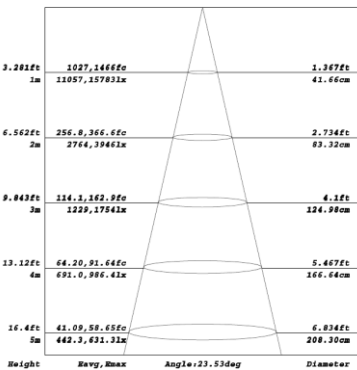
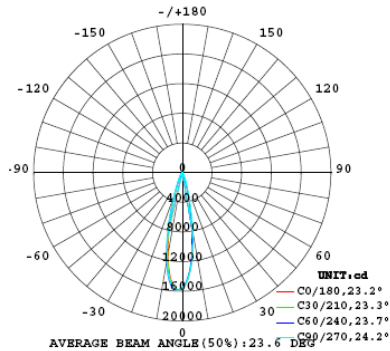
Beam angle 15degree



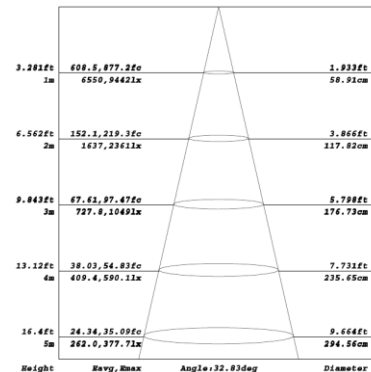
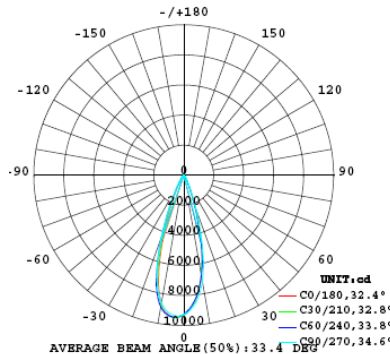
Distance curve



Beam angle 24degree

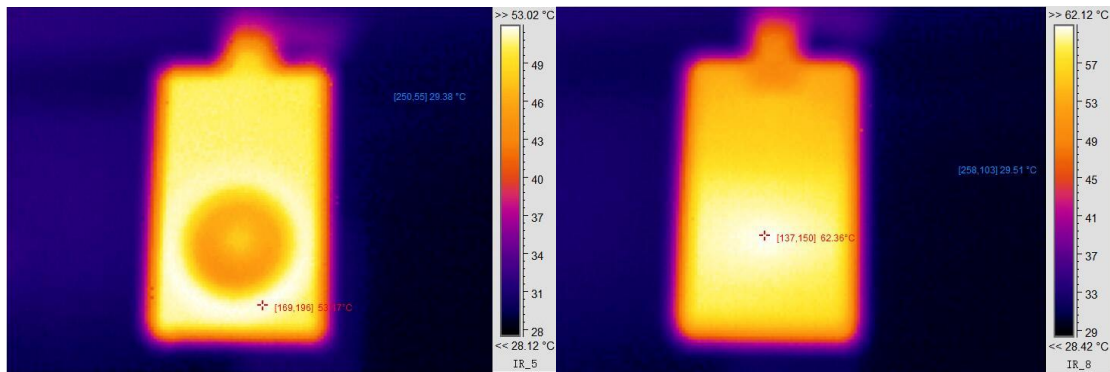


Beam angle 36degree





10. Infrared Thermography:



11. Package:

Model	XH-TL-30-I
Quantity:	10pcs/carton
Inner box size:	300*170*70mm
Carton size:	380*370*332mm
Gross Weight:	14.5kg

12 Accessories:

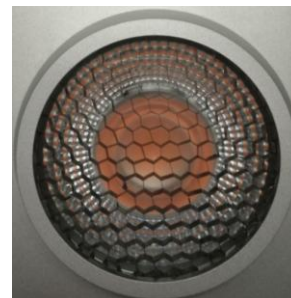
Surface mounted holder



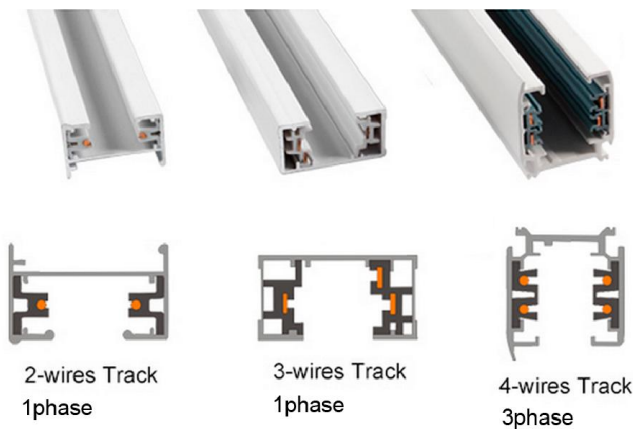
Hanging holder



Honeycomb



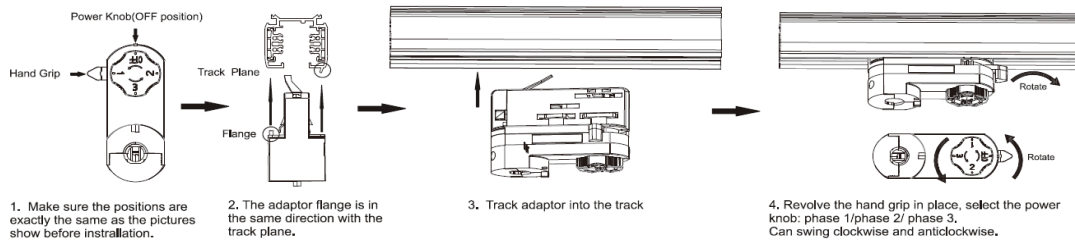
3 type track for 3 type adapter:



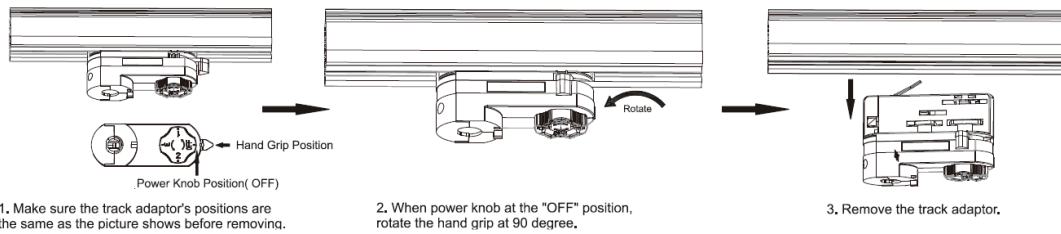
13. Projects:



14 Installation manual:



Remove manual:



15: Attention:

